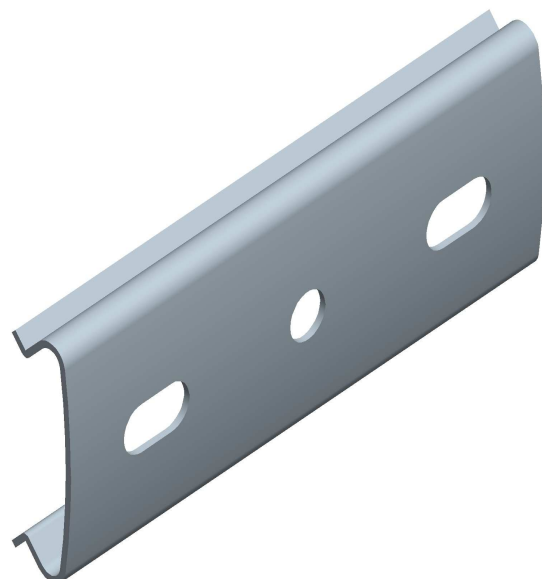


Rejiband box support



DESCRIPTION

Part for fixing boxes to [Rejiband](#) wire mesh trays by connecting this bracket to the tray using the Click System.

ADVANTAGES

Very rapid assembly by pressing into place using the [Click System](#) which needs no screws or other fixing components.

Economical and reusable.

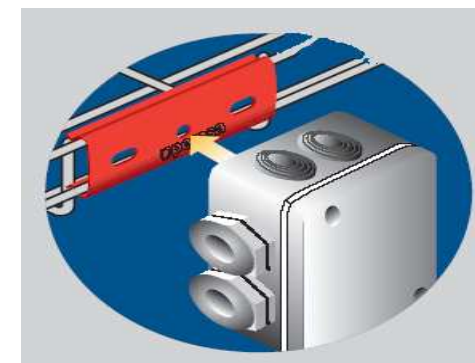
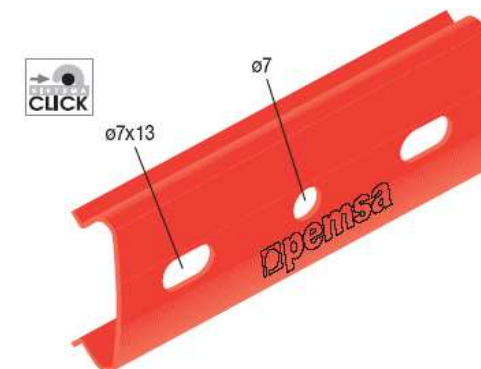
Prevents electrical conductivity between box and tray.

FINISHES

Material: Plastic. Colour red.

APPLICATIONS

Use to attach boxes or other components to [Rejiband](#) wire mesh trays by attaching this part by pressing it into place on the tray mesh.



RELATED PRODUCTS

Tray:

[Rejiband](#)

Accessories:

[Data Outlet– Fixing support for Rejiband– Identification Plate – Identification Label - Rejifix - ...](#)

RELATED DOCUMENTATION

[Product Information](#)