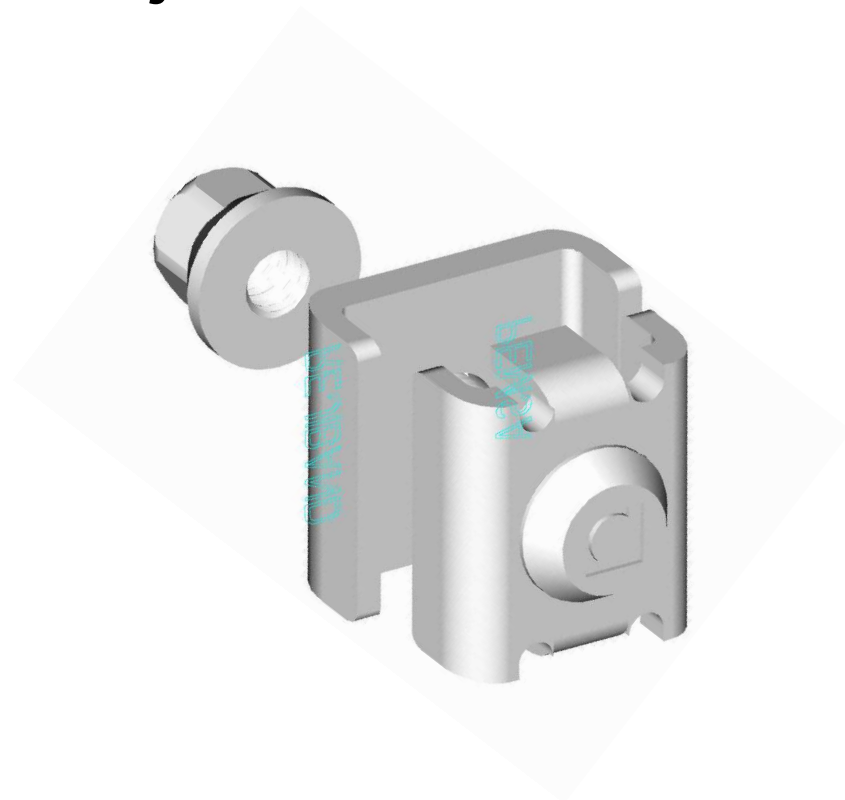


# Rejiband earth terminal



## DESCRIPTION

Metal part designed to achieve proper earthing of the electrical installation ensuring personnel safety against possible short circuits.

## ADVANTAGES

New design, cheaper and smaller packaging unit (pack of 20).

Suitable for 16 – 35 mm<sup>2</sup> cables.

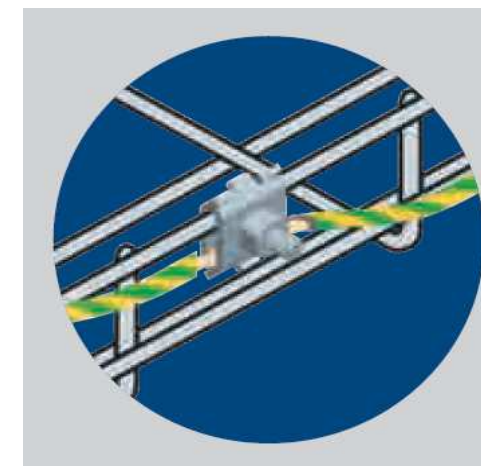
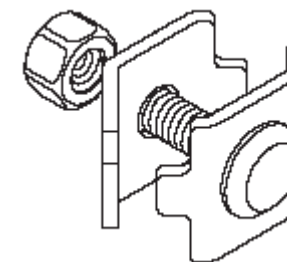
The number of earth terminals needed depends on the length of the section of tray to be installed.

## FINISHES

**Nickel plated brass.**

## APPLICATIONS

To achieve proper earthing of the electrical system we recommend the installation of an independent earthing circuit by connecting each of the [Rejiband](#) system components (trays and accessories) to a conductor with a suitable cross-section, never less than 16 mm<sup>2</sup>.



## RELATED PRODUCTS

### Trays:

[Rejiband](#)

### Accessories:

[Fixing – Joining Plate](#) - [Multijoint](#) - [Click Joint](#)  
[Reinforced joint...](#)

## RELATED DOCUMENTATION

[Product Information](#)